

Location and Timing - Deep Seismic Sounding Planning and Realization

Centrum Badań Ziemi i Planet



Wojciech Czuba

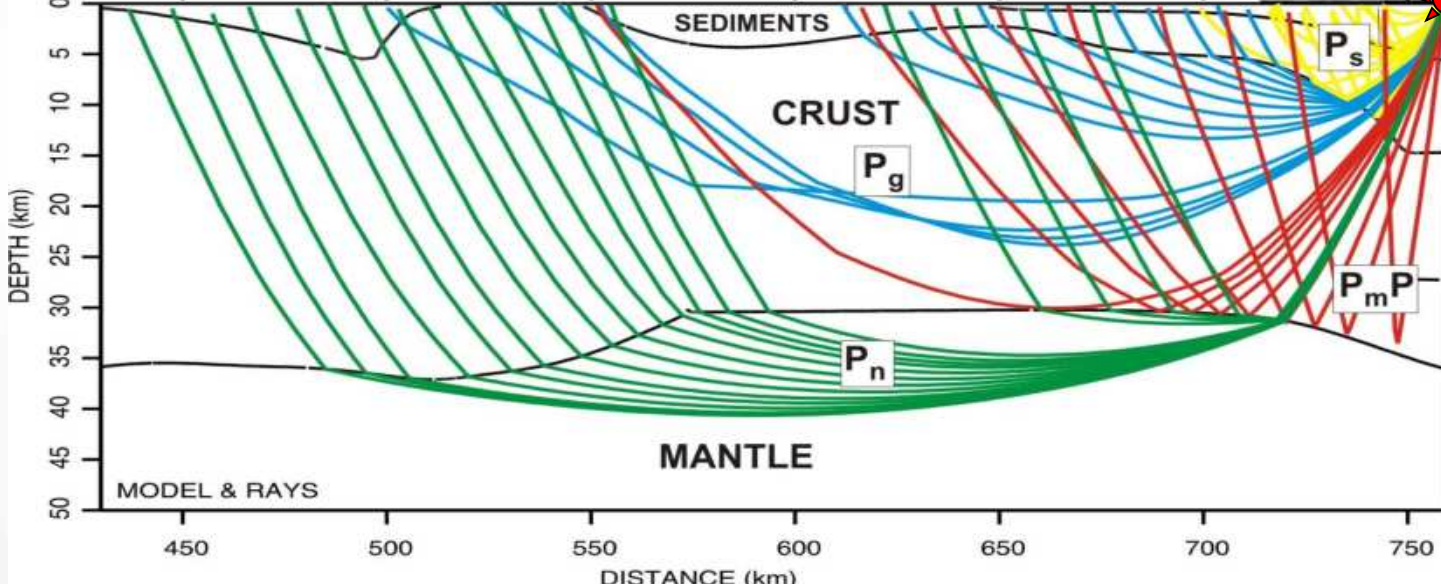
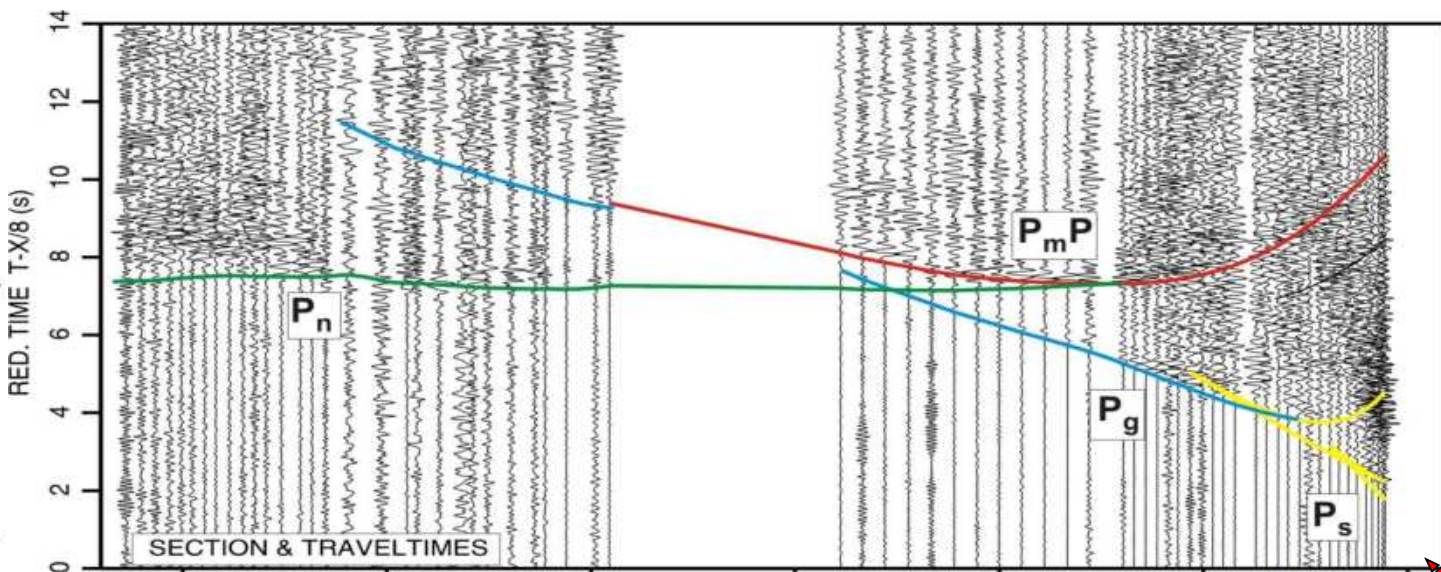
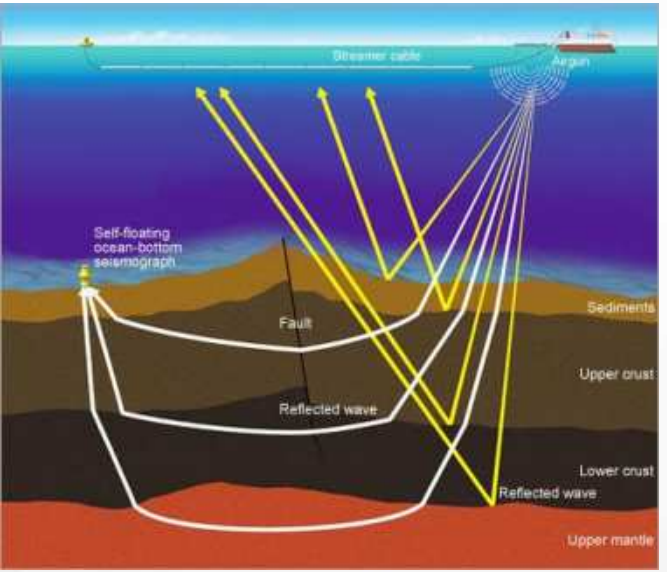
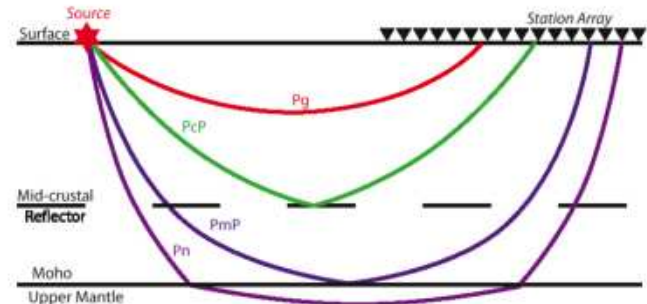
**Institute of Geophysics, Polish Academy of Sciences
Department of Lithospheric Research**



**Institute of Geophysics
Polish Academy of Sciences**

Sopot 2024

Typical seismic raypaths in the lithosphere and their records



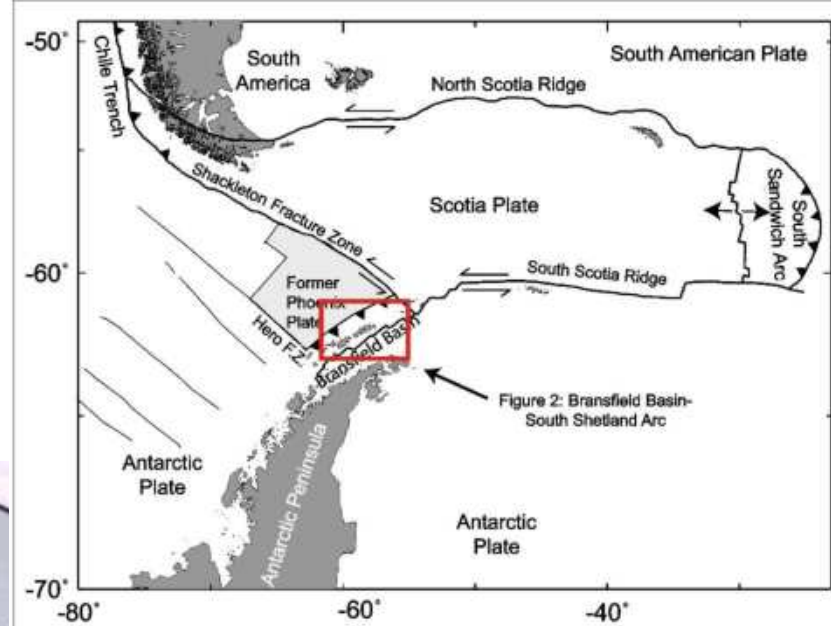
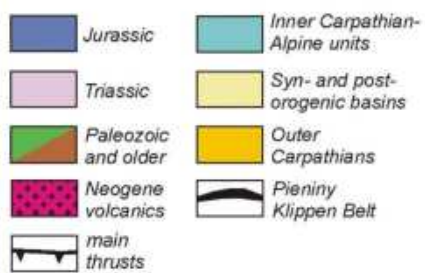
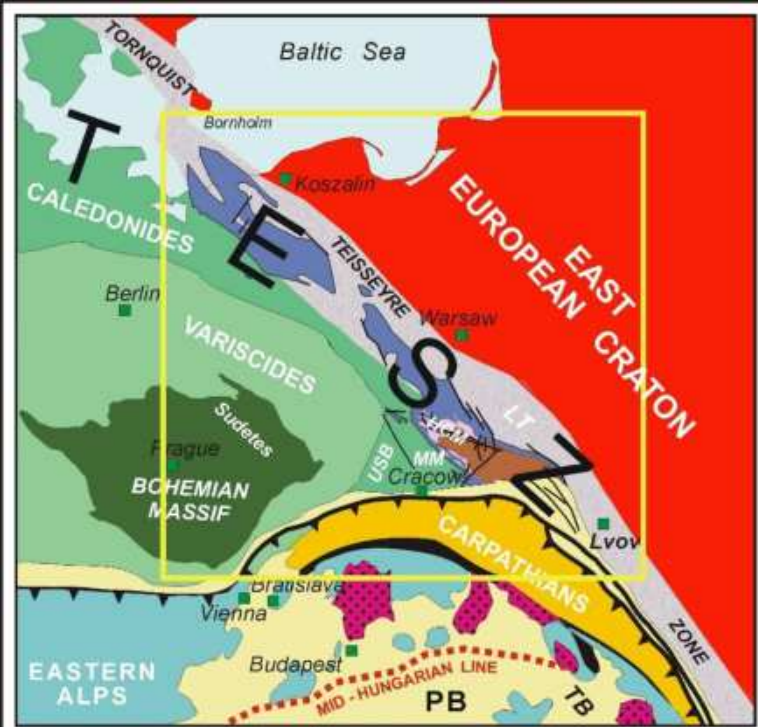
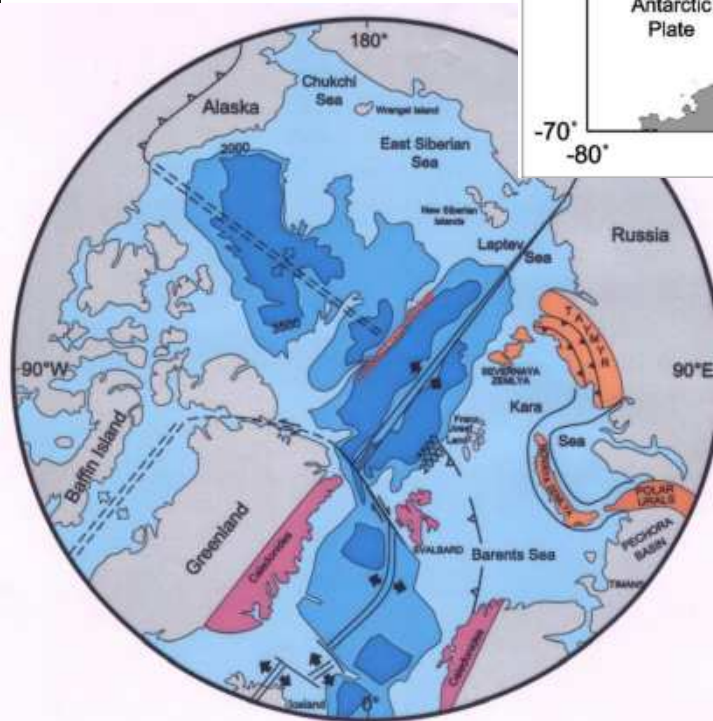


Figure 2: Bransfield Basin-South Shetland Arc



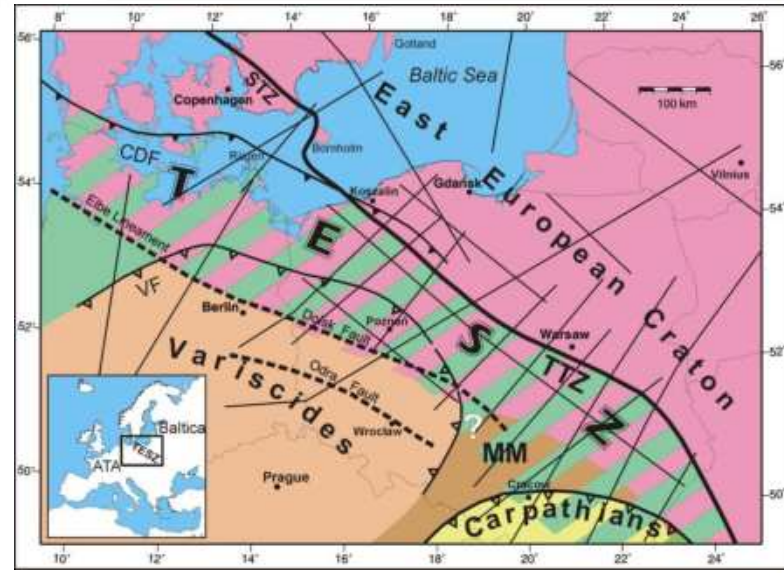
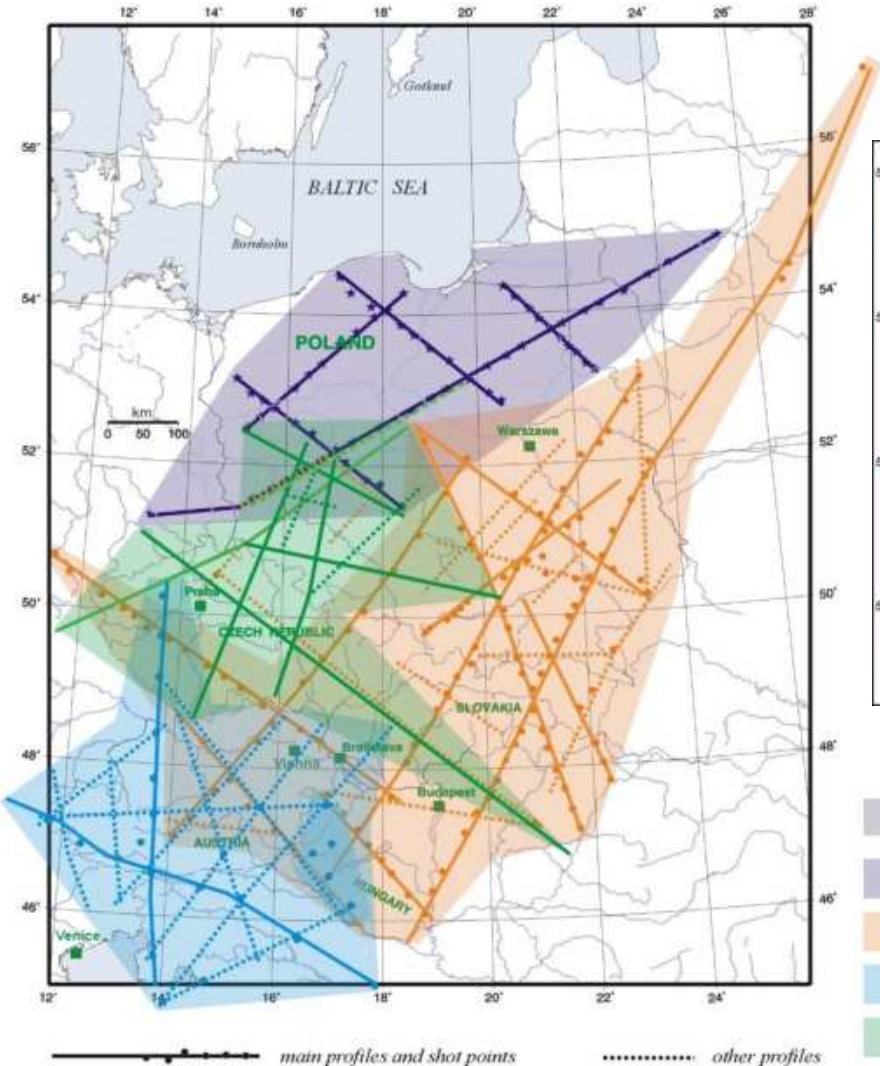
Huge seismic experiments in the Central Europe Summary

Location of seismic experiments in Central Europe

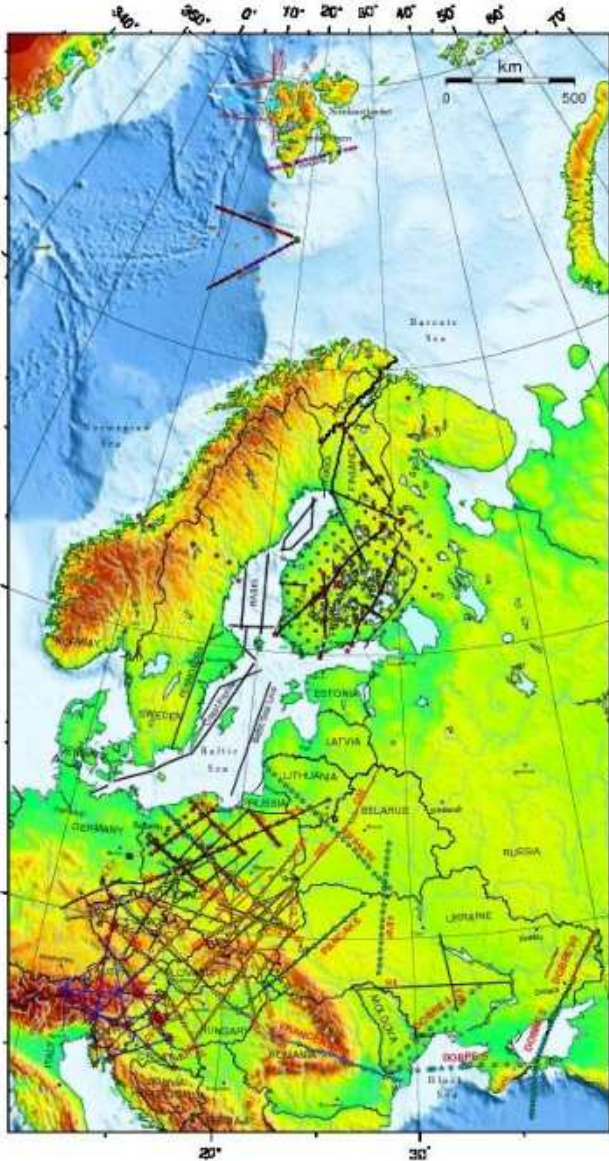
profile lines total length ca. 19000 km

with ca. 7000 seismic receivers

dots - 295 seismic sources



Experiment	shots	stations	length
POLONAISE'97	64	613	2000
CELEBRATION 2000	147	1240	8900
ALP 2002	32	1124	4500
SUDETES 2003	52	956	3450



CELEBRATION 2000

Central European Lithospheric Experiment Based on Refraction, June 2000

Organizing Committee:

Aleksander Guterch, Institute of Geophysics, Polish Academy of Sciences, Poland

Marek Grad, Institute of Geophysics, University of Warsaw, Poland

G. Randy Keller, University of Texas at El Paso, USA

Karoly Posgay, Eotvos Lorand Geophysical Institute, Budapest, Hungary

Josef Vozar, Geological Survey, Bratislava, Slovak Republic

Ales Spicak, Geophysical Institute, Prague, Czech Republic

Ewald Brueckl, Technical University, Vienna, Austria

Zoltan Hajnal, University of Saskatchewan, Canada

Hans Thybo, University of Copenhagen, Denmark

Oguz Selvi, TUBITAK-MAM, Earth Science Research Institute, Gebze, Turkey

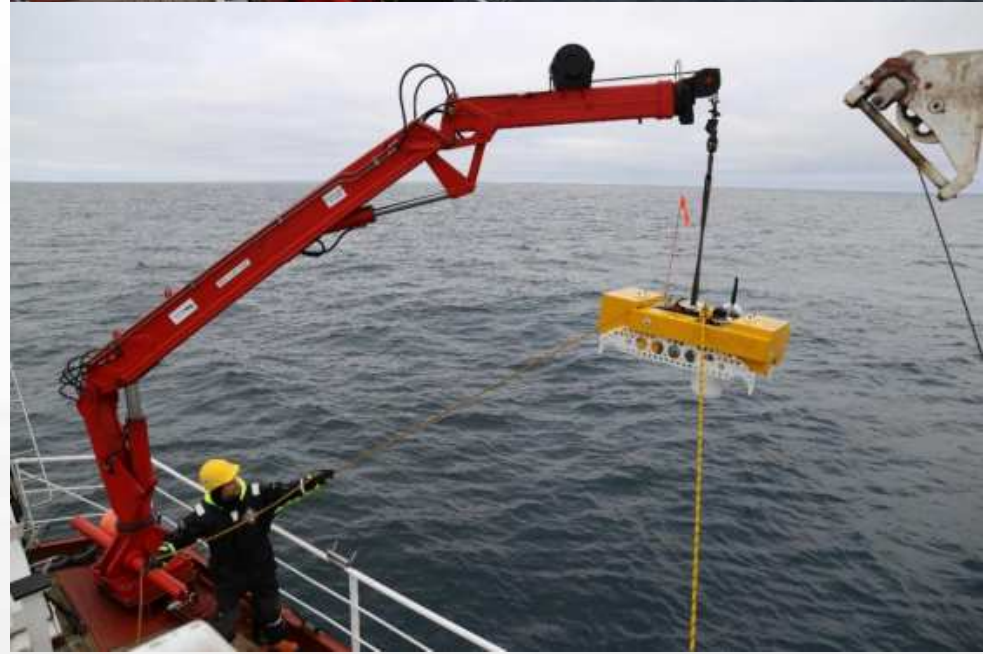
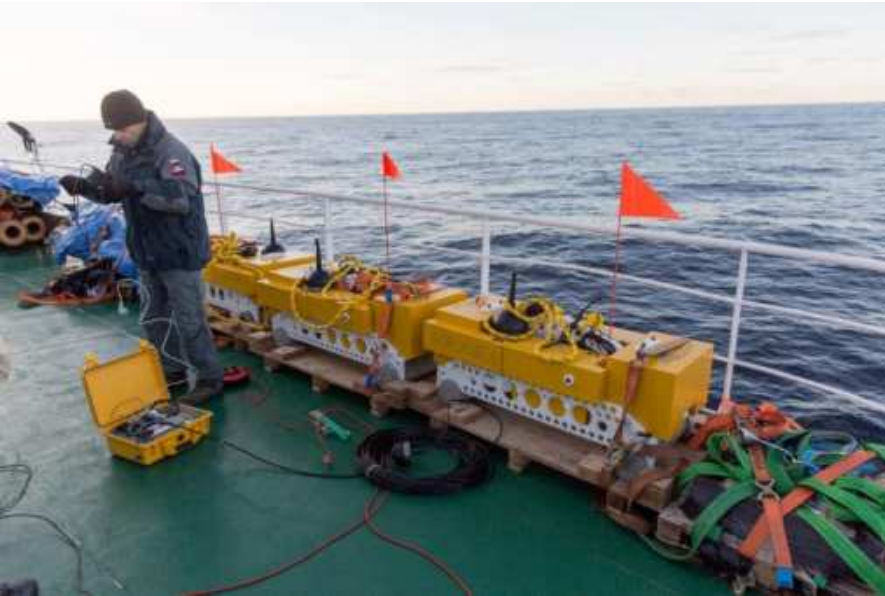


Experiment and Interpretation Team: *Wojciech Czuba, Edward Gaczyński, Tomasz Janik, Michal Malinowski, Piotr Środa, Monika Wilde-Piórko*, Poland; *Tiffni Bond, Steven Harder, Kate C. Miller*, USA; *Tamas Fancsik, Endre Hegedus, Attila C. Kovacs*, Hungary; *Pavala Hrubcova*, Czech Republic; *Kai Aric, Franz Kohlbeck, Michael Behm, Werner Chwatal*, Austria; *Isa Asudeh, Ronald Clowes*, Canada; *Peer Joergensen*, Denmark; *Sergey L. Kostuchenko*, Russia; *Gerhard Jentzsch, Dieter Kracke*, Germany; *Timo Tiira, Jukka Yliniemi, Kari Komminaho*, Finland; *Andrey A. Belinsky*, Belarus









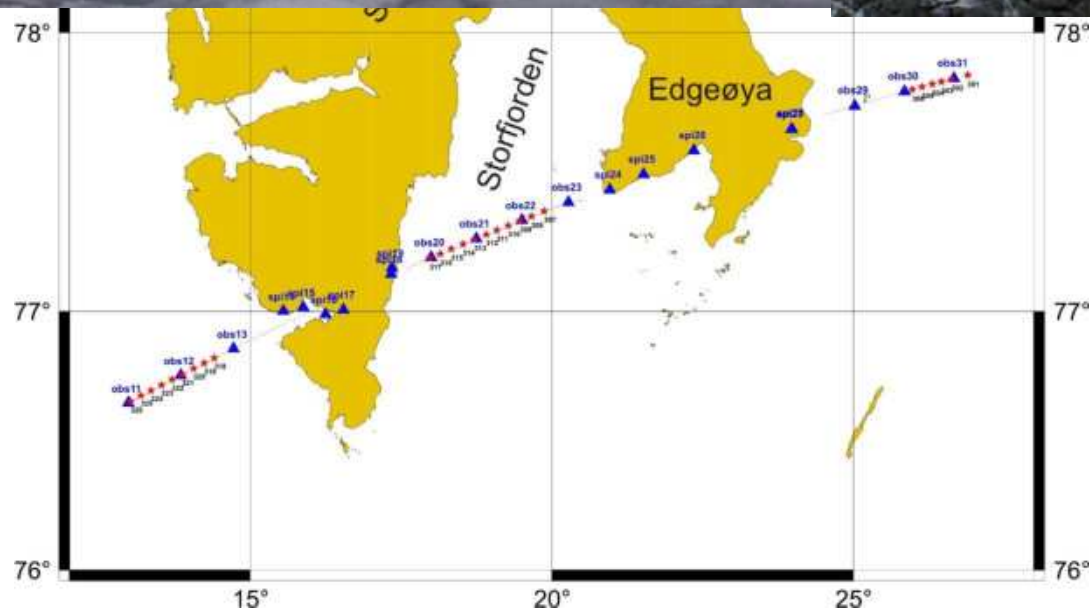
International Polar Year Project Consortium

NORSAR, Norway
University of Bergen, Norway
University of Oslo, Norway
Alfred Wegener Institute, Germany
Institute of Geophysics PAS, Poland
University of Potsdam, Germany
University of Warsaw, Poland

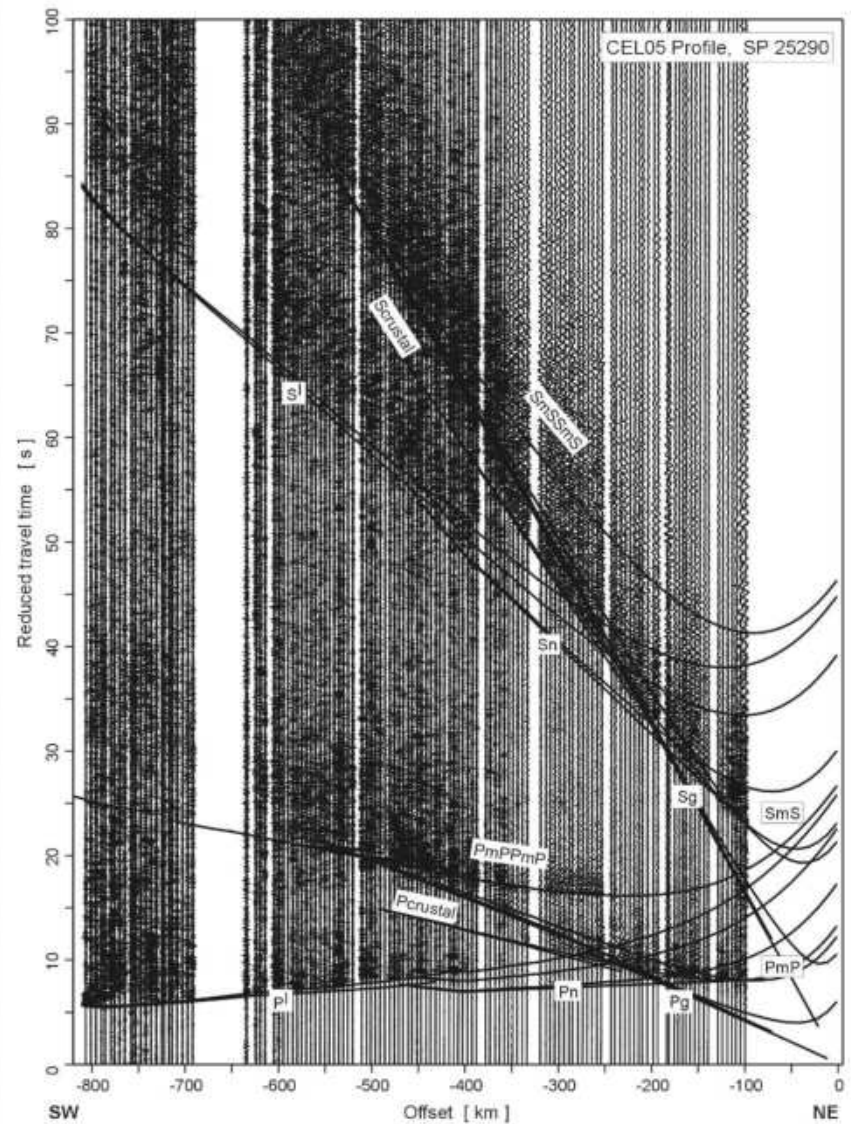
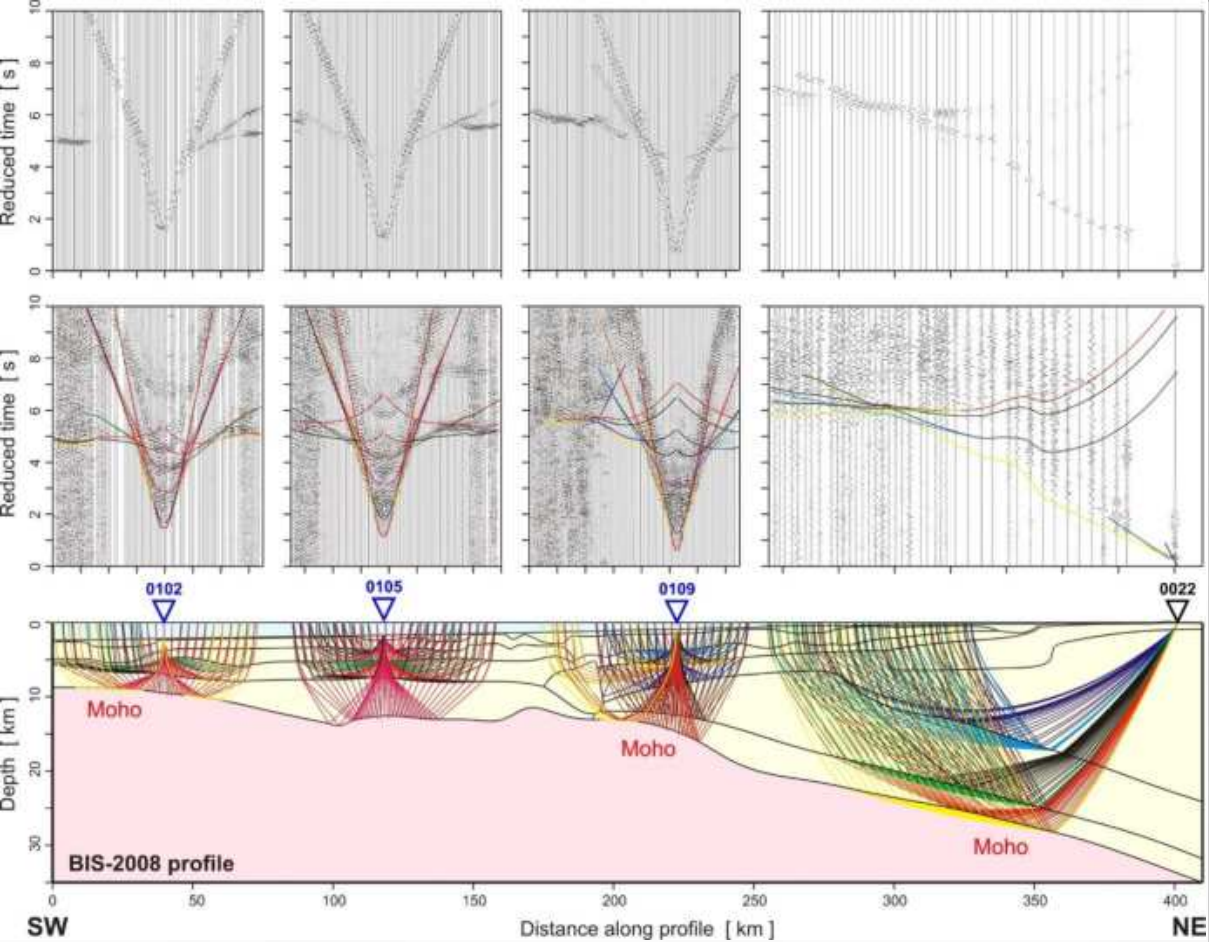
IPY Cluster

Plate Tectonics and Polar Gateways in Earth History
(Plates&Gates), in the Arctic consisting of 18 planned projects

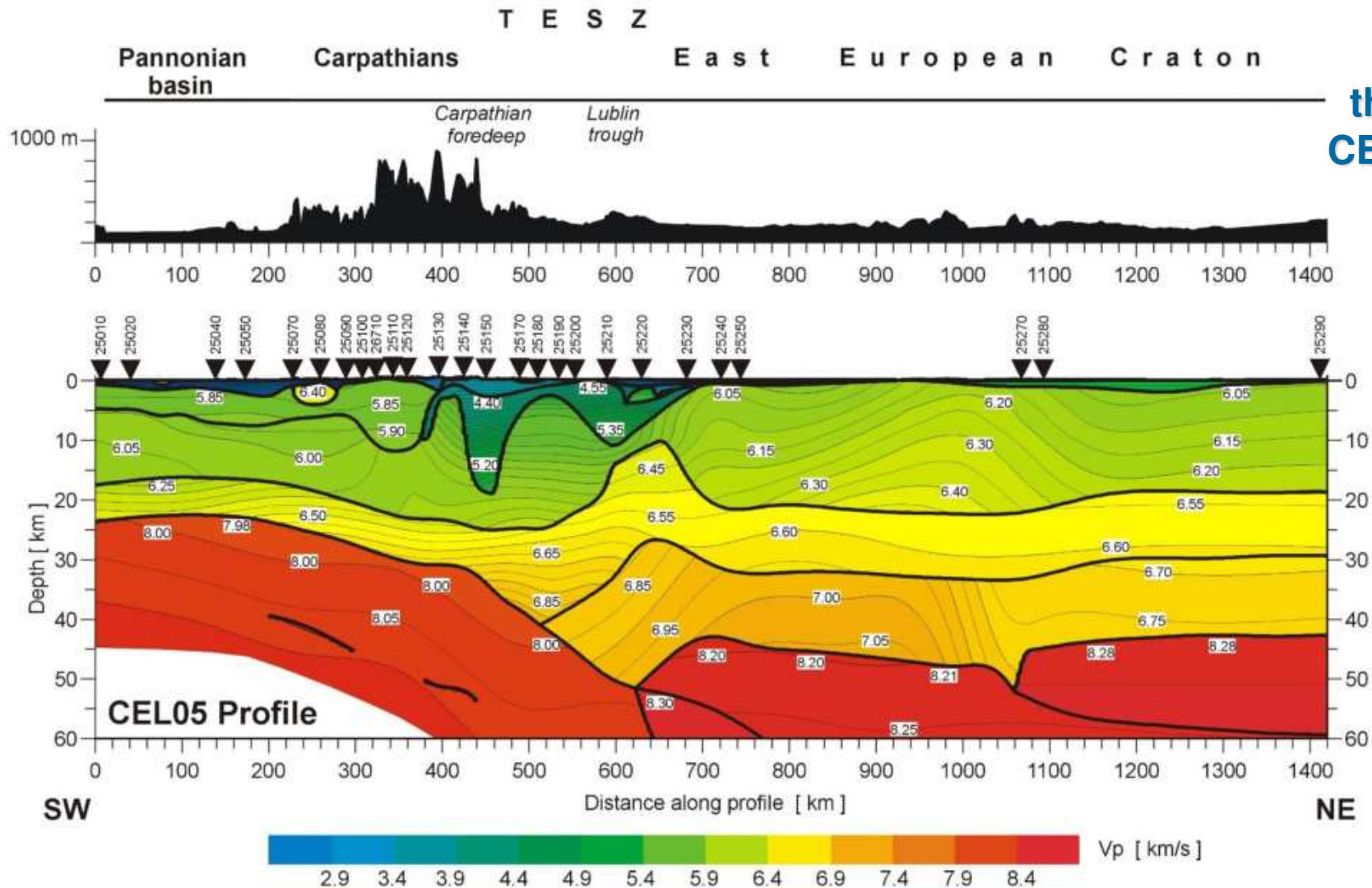


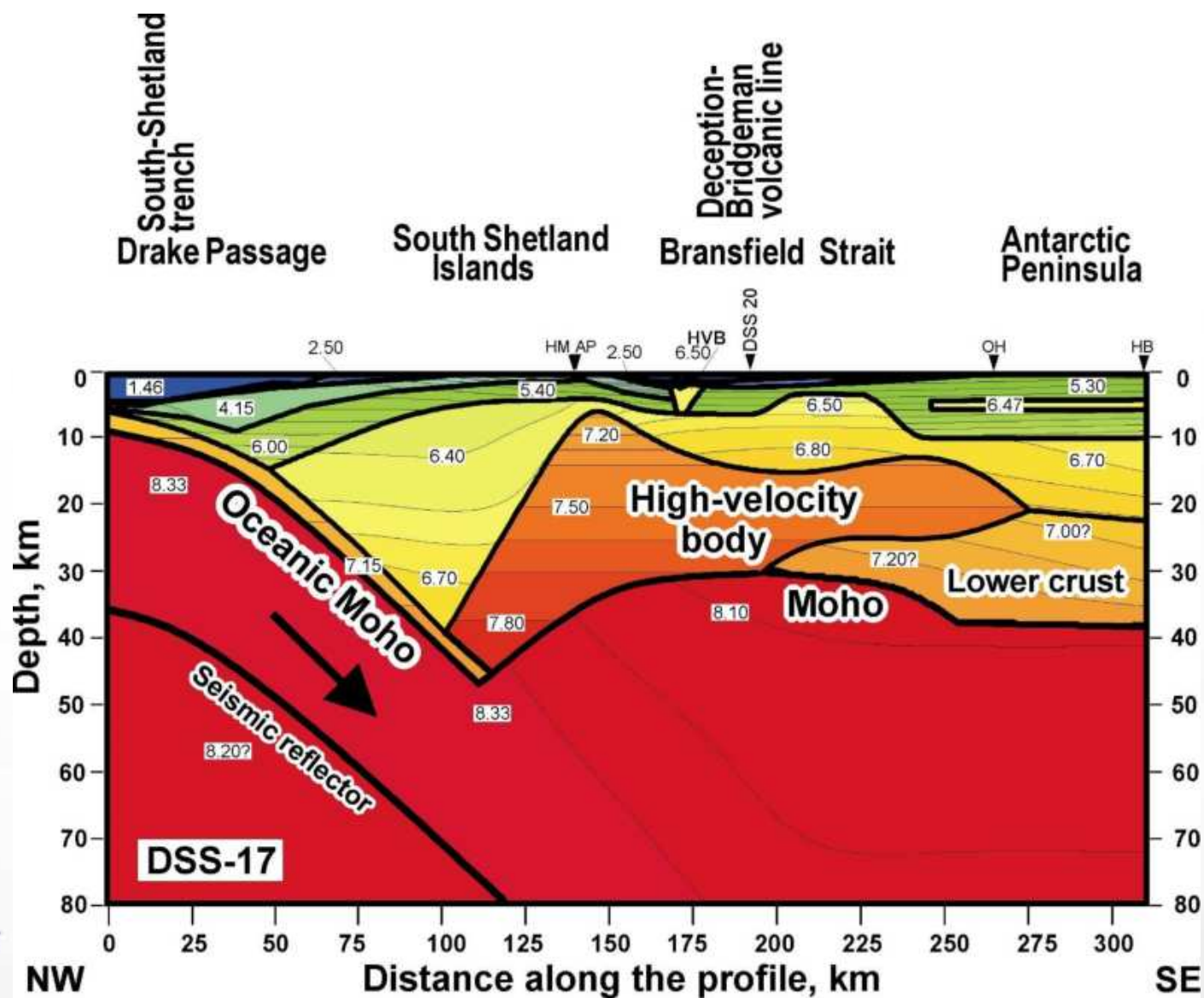






Seismic model along the CEL05 profile, CELEBRATION 2000







Thank you